



Andy Beshear  
GOVERNOR

## TRANSPORTATION CABINET

200 Mero Street  
Frankfort, Kentucky 40601

Jim Gray  
SECRETARY

May 11, 2023

CALL NO. 308  
CONTRACT ID NO. 232222  
ADDENDUM # 1

Subject: Breckinridge County, FD05 014 0259 007-014  
Letting May 25, 2023

- (1) Revised - Proposal Pages 10, 29, 30, and 32 of 53
- (2) Added - Proposal Pages 30A, 32A, 32B, 32C, and 32D

Proposal revisions are available at <http://transportation.ky.gov/Construction-Procurement/>.

If you have any questions, please contact us at 502-564-3500.

Sincerely,

Rachel Mills,

A handwritten signature in black ink that reads "Rachel Mills".

Rachel Mills, P.E.  
Director  
Division of Construction Procurement

RM:mr  
Enclosures

### **DEFERRED PAYMENT**

The successful bidder on this project has the distinct understanding that payment for any work may be delayed until July 15, 2023. Work Order/Notice to Proceed will be issued in accordance the Standard Specifications for Road and Bridge Construction, current edition.

### **SURFACING AREAS**

The Department estimates the mainline surfacing width to be varied 20 to 32 feet.

The Department estimates the total mainline area to be surfaced to be 68,460 square yards.

The Department estimates the shoulder width to be varied 0 to 8 foot on each side.

The Department estimates the total shoulder area to be surfaced to be 6,780 square yards.

### **ASPHALT MIXTURE**

Unless otherwise noted, the Department estimates the rate of application for all asphalt mixtures to be 110 lbs/sy per inch of depth.

### **INCIDENTAL SURFACING**

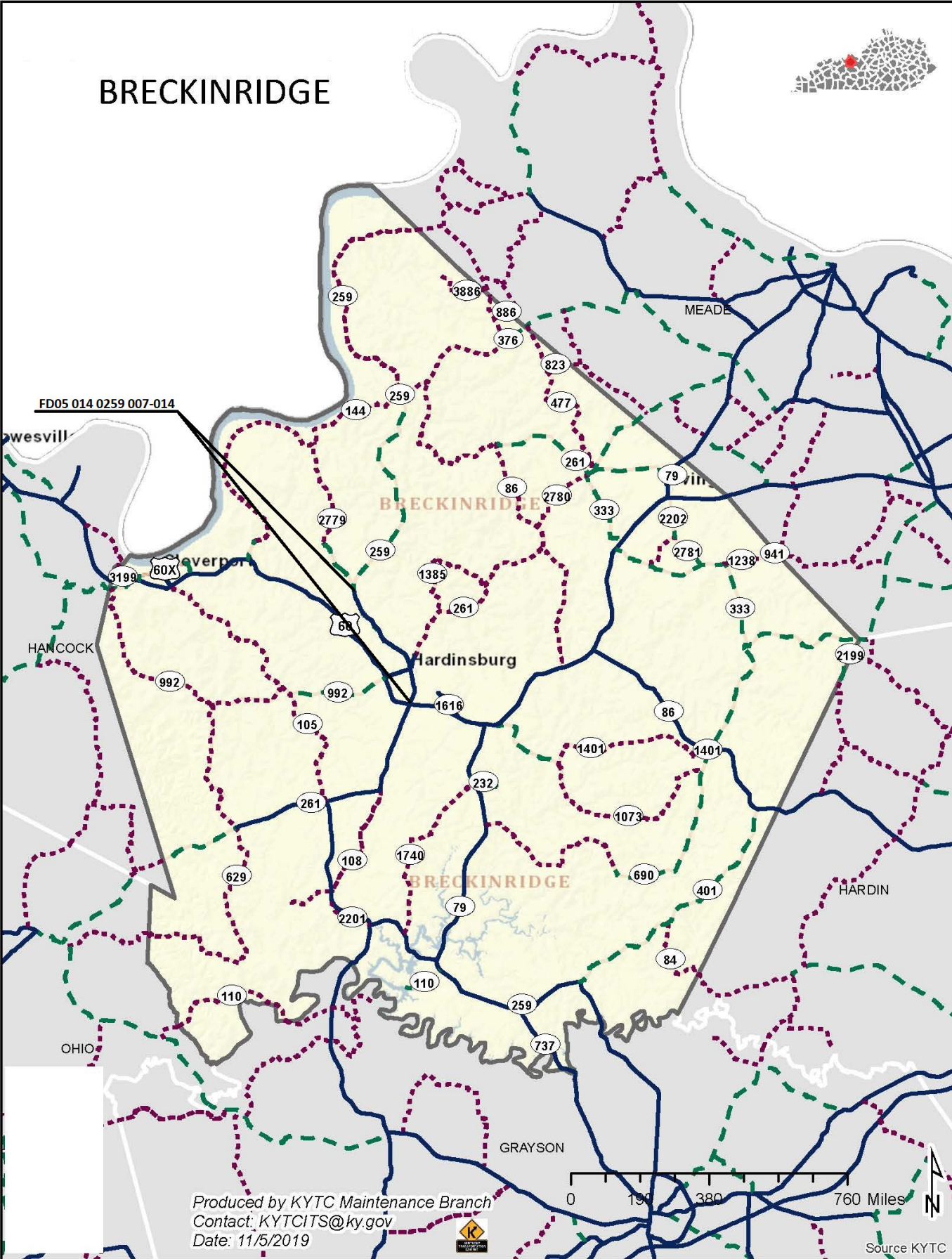
The Department has included in the quantities of asphalt mixtures established in the proposal estimated quantities required for resurfacing or surfacing mailbox turnouts, farm field entrances, residential and commercial entrances, curve widening, ramp gores and tapers, and road and street approaches, as applicable. Pave these areas to the limits as shown on Standard Drawing RPM-110-06 or as directed by the Engineer. In the event signal detectors are present in the intersecting streets or roads, pave the crossroads to the right of way limit or back of the signal detector, whichever is the farthest back of the mainline. Surface or resurface these areas as directed by the Engineer. The Department will not measure placing and compacting for separate payment but shall be incidental to the Contract unit price for the asphalt mixtures.

### **FUEL AND ASPHALT PAY ADJUSTMENT**

The Department has included the Contract items Asphalt Adjustment and Fuel Adjustment for possible future payments at an established Contract unit price of \$1.00. The Department will calculate actual adjustment quantities after work is completed. If existing Contract amount is insufficient to pay all items on the contract with the adjustments, the Department will establish additional monies with a change order.

### **OPTION B**

Be advised that the Department will control and accept compaction of asphalt mixtures furnished on this project under OPTION B in accordance with Sections 402 and 403.

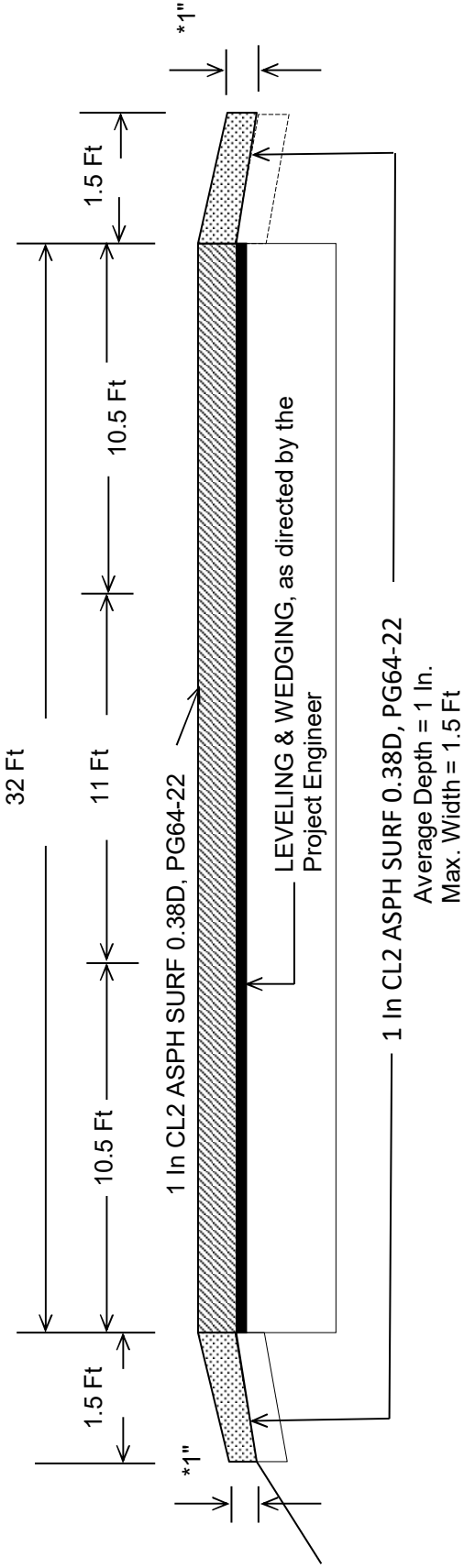




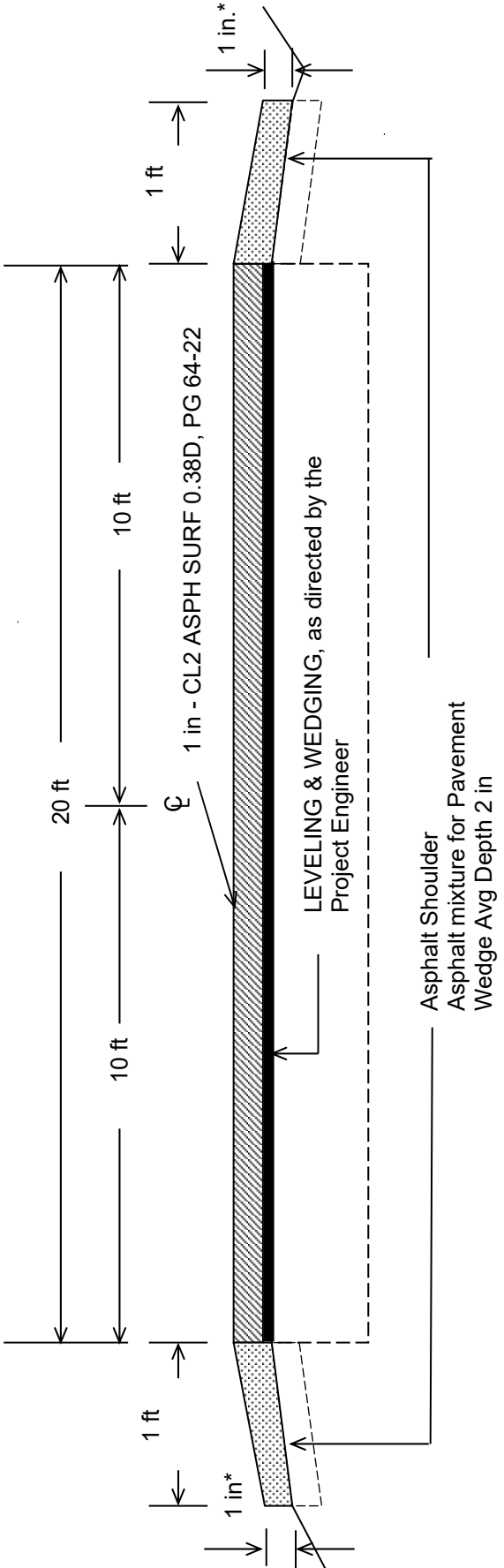


**Breckinridge County  
TYPICAL SECTION  
FD04 014 0259 007-014  
MP's 7.901 to 8.040**

MP's include transition to 2 lane

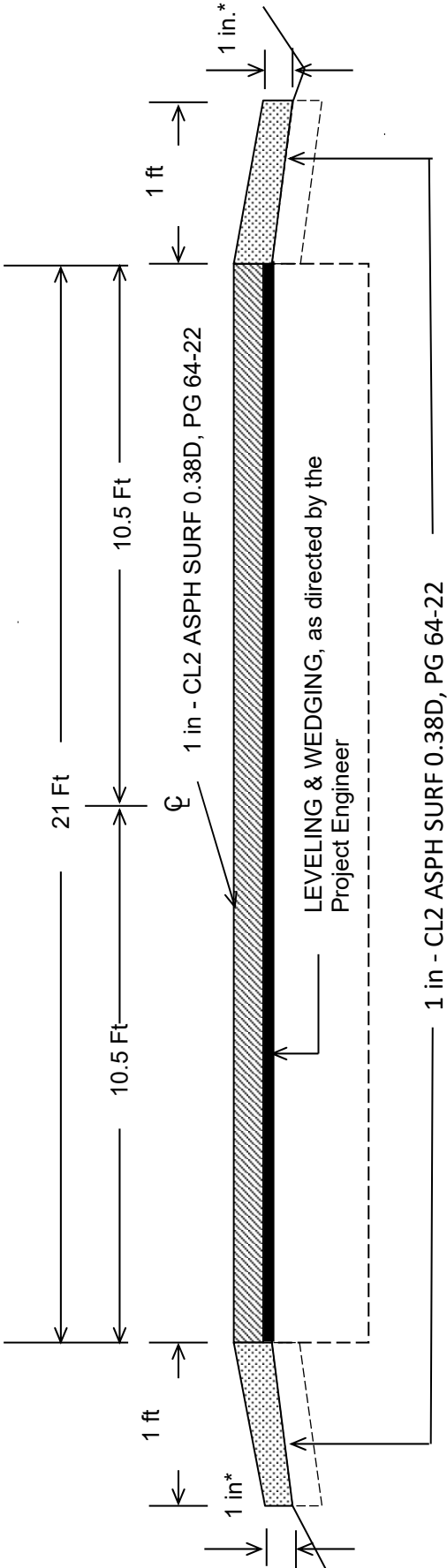


**Breckinridge County**  
**\*\*TYPICAL SECTION**  
**FD05 014 0259 007-014**  
**MP's 8.040-8.800 and**  
**9.535-13.094**



**\*Where Existing Site Conditions Permit**  
**\*\*Use this typical for all 2 lane sections with speed limit over 35 mph**

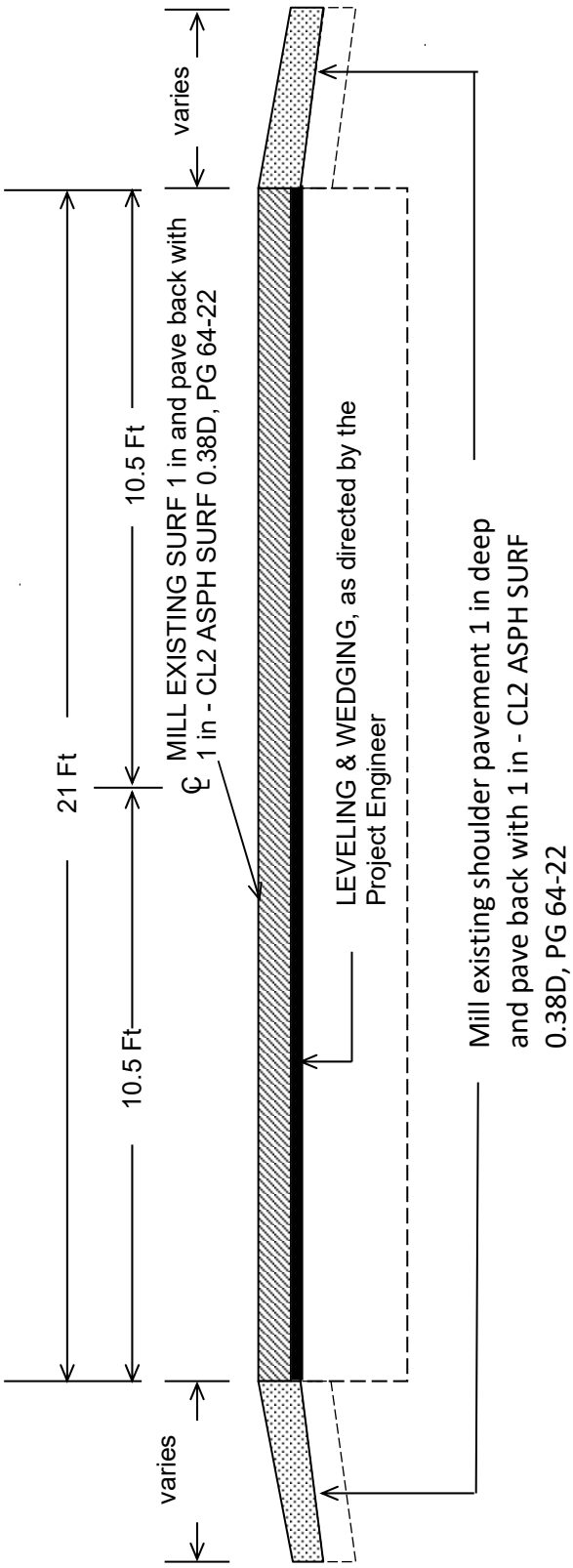
**Breckinridge County  
TYPICAL SECTION  
FD05 014 0259 007-014  
\*\*MP's 8.800-9.077 and  
9.364-9.535**



**\*Where Existing Site Conditions Permit  
\*\*Begin 35 MPH Zone extending North to W 4th ST and KY 261 extending North to End 35 MPH Zone**

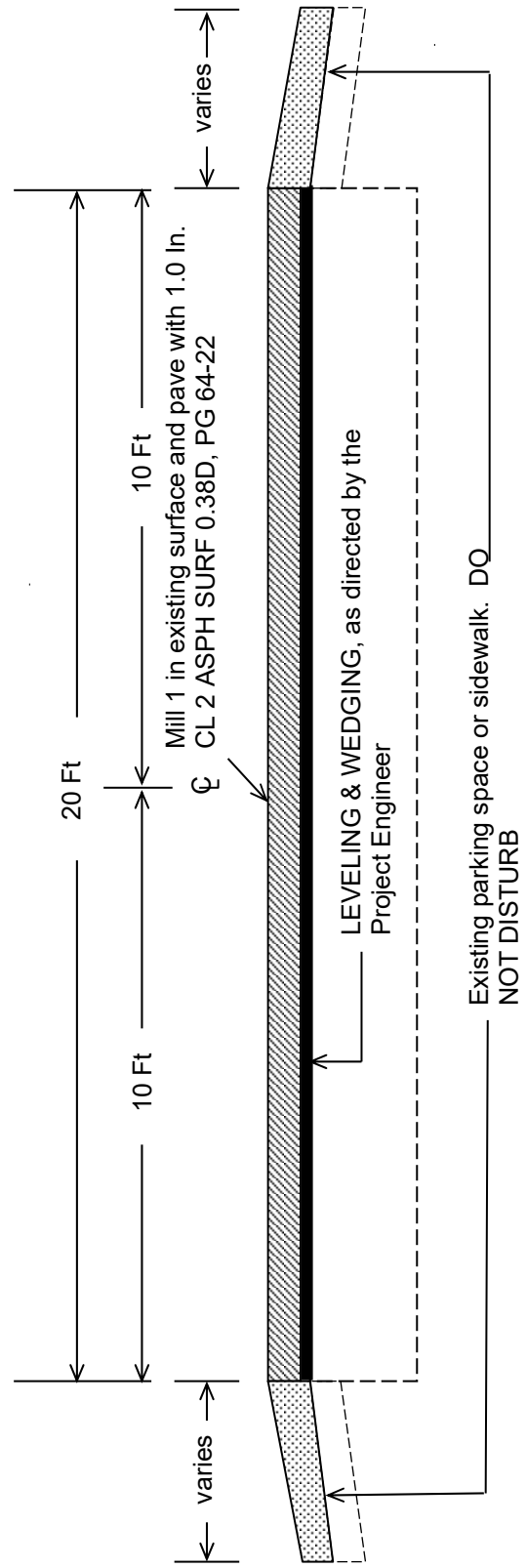


**Breckinridge County  
TYPICAL SECTION  
FD05 014 0259 007-014  
MP's 9.077-9.187  
W 4th St to 3rd St**

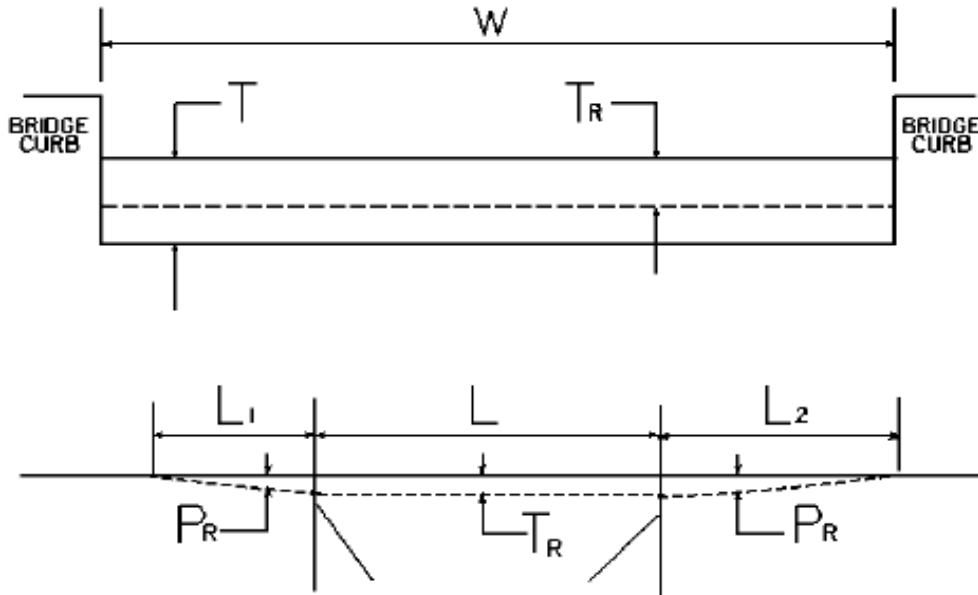


**\*Shoulder widths vary. Mill and replace all asphalt pavement in this section.**

**Breckinridge County  
TYPICAL SECTION  
FD05 043 0259 007-014  
MP's 9.187-9.364**



**BRIDGE DETAIL FOR PAVING PROJECT**



W = bridge width curb to curb  
 T = thickness of existing asphalt overlay  
 L = length of bridge  
 L<sub>1</sub> & L<sub>2</sub> = length of approach pavement to be removed  
 T<sub>R</sub> = thickness to be removed and replaced on bridge  
 P<sub>R</sub> = thickness to be removed and replaced on pavement  
 Note: L<sub>1</sub> & L<sub>2</sub> lengths shall be determined by using a transition rate of 100 ft/in of thickness

Route	Bridge No.	MP	W (ft)	T (in)	L <sub>1</sub> (ft)	L <sub>2</sub> (ft)	T <sub>R</sub> (in)	L (ft)	P <sub>R</sub> (in)
KY 259	B00021N	10.016	22.00		0.00	0.00	0.00	34.10	1.00
KY 259	B00022N	11.894	24.00		0.00	0.00	0.00	25.90	1.00